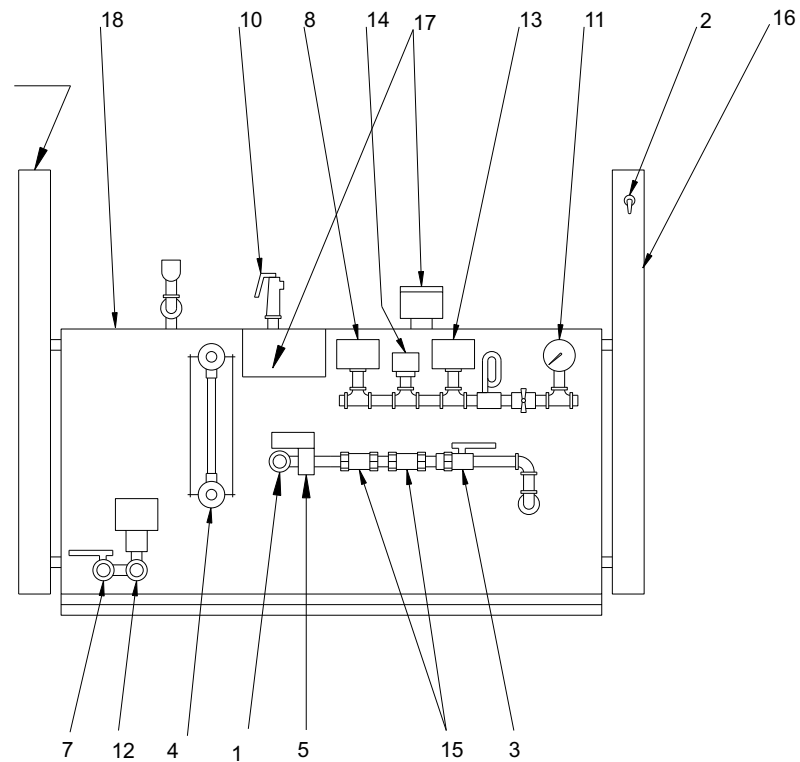


DOUBLE ELECTRIC
CONTROL BOX
ON LB-100,120,
150, 180, & 240.

END VIEW



SIDE VIEW

NOTE:

ITEMS 9 & 12 SUPPLIED WHEN
AUTO-FLUSH & DRAIN IS
SPECIFIED.

1. WATER INLET STRAINER 1/2"
2. ON-OFF SWITCH
3. UNION BALL VALVE 1/2"
4. GAUGE GLASS ASSEMBLY (SEISMIC OPTIONAL)
5. WATER INLET SOLENOID 1/2"
6. STEAM OUTLET VALVE
7. MAIN DRAIN VALVE 3/4"
8. PRESSURE CONTROL
9. VACUUM VALVE 1/2"
10. SAFETY VALVE
11. STEAM PRESSURE GAUGE
12. MOTORIZED FLUSH AND DRAIN 3/4" (OPTIONAL)
13. PRESSURE CONTROL MANUAL RESET
14. MOTORIZED FLUSH AND DRAIN 5 P.S.I. PRESSURE CONTROL (OPTIONAL)
15. CHECK VALVES 1/2"
16. ELECTRIC PANEL BOX
17. ELECTRIC WATER CONTROLS
18. GENETATOR CABINET

		DATE	ELECTRO-STEAM GENERATOR CORP. <small>1000 Bernard Street, Alexandria, Virginia 22314-1299</small>	
DRAWN BY	IZQUIERDO	03/00		
CHECKED				
ENGINEER				
APPROVED	RALPH ASPLING		DRAWING TITLE PARTS LEGEND-LB-80(L)-LB-240(L) WITH ELECTRIC WATER LEVEL CONTROL	
SIZE	AUTOCAD R14 FILE	DWG. NO.	REV.	
	50006	8008	-	
SCALE:	N/A	SHEET:	1 OF 1	