

This drawing and all information therein are the property of Electro-Steam Generator Corp. and shall not be disclosed, in whole or in part, to any third party without prior permission of Electro-Steam Generator Corp.

REVISIONS

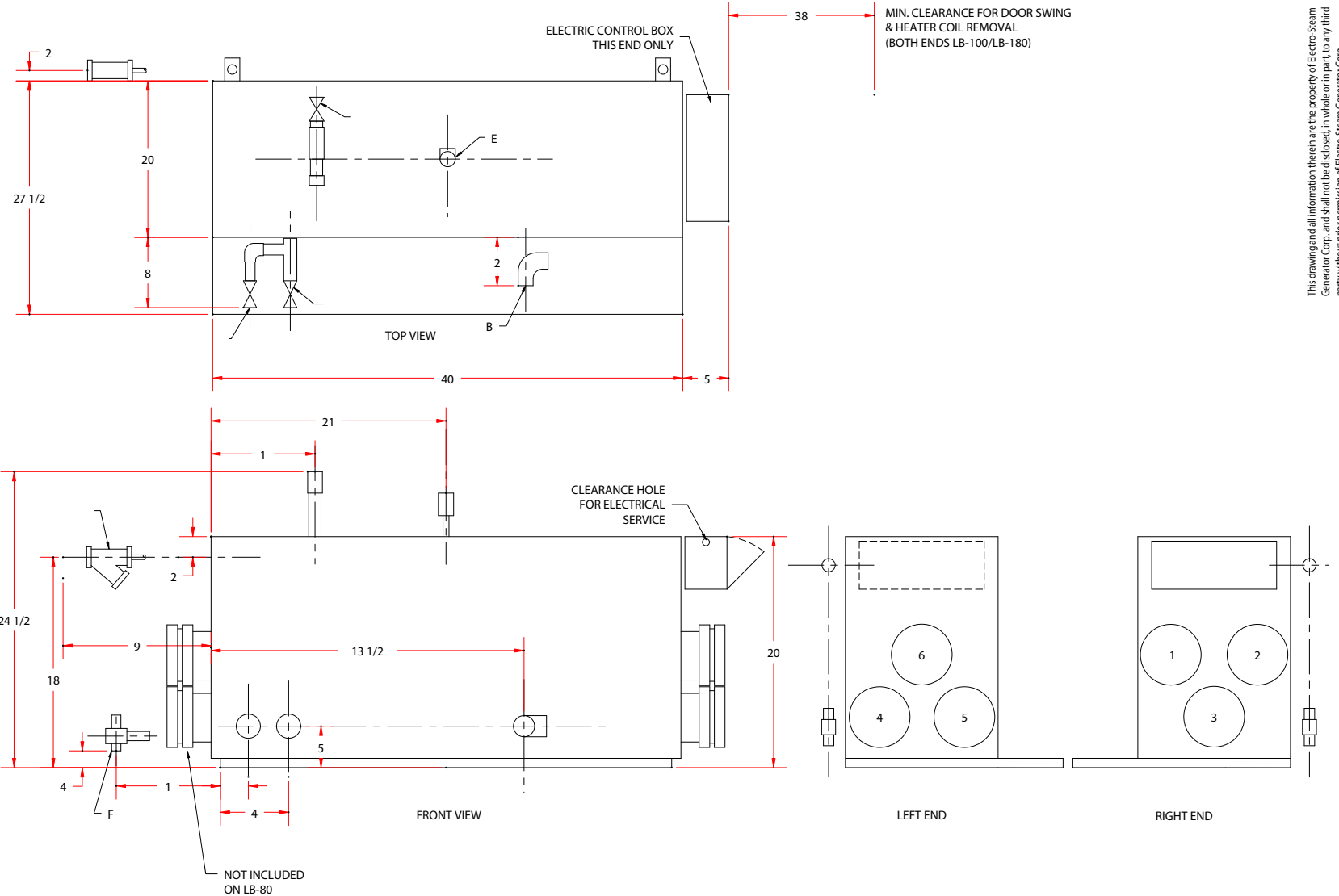
DATE	DESCRIPTION	DRAWN BY	CHECKED	APPROVED
8/02/02		STEPHEN JONES		

ELECTRO-STEAM GENERATOR CORP.

1000 Bernard Street, Alexandria, Virginia 22314-1299

**INSTALLATION DATA - LB-80-240
INDIRECT STEAM - WITH MANIFOLD PIPING**

SCALE: N/A	SIZE: AUTOCAD R14 FILE	DWG. NO. PRI-6506-A	REV. -
	50230		
			SHEET: 1 OF 1



NOTE:
1. CONTRACTOR TO PROVIDE MINIMUM 8" CLEARANCE AROUND GENERATOR FOR SERVICING.
2. WEIGHT OF UNIT: 750LBS

HEATER COIL CONFIGURATION
LB-80 - 1, 2, 3
LB-100 - 1, 2, 4, 5
LB-120 - 1, 2, 4, 5
LB-150 - 1, 2, 3, 4, 5, 6
LB-180 - 1, 2, 3, 4, 5, 6
LB-240 - 1, 2, 3, 4, 5, 6

A- MANUAL BLOW DOWN VALVE
B- WATER INLET
C- STEAM OUTLET
D- AUTO FLUSH & DRAIN (MAFD)
E- SAFETY VALVE
F- TRAP
G- PLANT STEAM INLET

MODEL	SAFETY	INLET	OUTLET	MAFD	PLANT IN.	TRAP
LB-80	1/2"	1/2"	3/4"	3/4"	1	3/4"
LB-100	1/2"	1/2"	3/4"	3/4"	1	3/4"
LB-120	3/4"	1/2"	3/4"	3/4"	1 1/4"	3/4"
LB-150	3/4"	1/2"	3/4"	3/4"	1 1/4"	3/4"
LB-180	3/4"	1/2"	3/4"	3/4"	1 1/4"	3/4"
LB-240	3/4"	1/2"	1	3/4"	1 1/4"	3/4"

**ALL PLUMBING N.P.T.